



## AQUACHECK SHUTTLE Quick Start Guide

Quick Start Guide no 1/2023/2



Soil Moisture Probes | Telemetry | Irrigation Management Software | Agronomy Services

[www.aquacheck.co.za](http://www.aquacheck.co.za)



# INDEX

## Shuttle / Probe Setup Guide

## PAGE #

- |   |   |
|---|---|
| 1. Switching the Shuttle On                               | 3 |
| 2. Setting the Date and Time on the Shuttle               | 3 |
| 3. Configuring Groups                                     | 4 |
| 4. Adding new Probes                                      | 4 |
| 5. Best Practice when setting up Groups and adding Probes | 5 |
| 6. Switching new Probes On                                | 5 |
| 7. Setting the Date and Time on a new Probe               | 5 |

## FTP Upload Utility Setup Guide

## PAGE #

- |  |   |
|--|---|
| 1. Installation of FTP Upload Utility  | 6 |
| 2. Configuration of FTP Upload Utility | 7 |

## Scanning of Probes with the Shuttle

## PAGE #

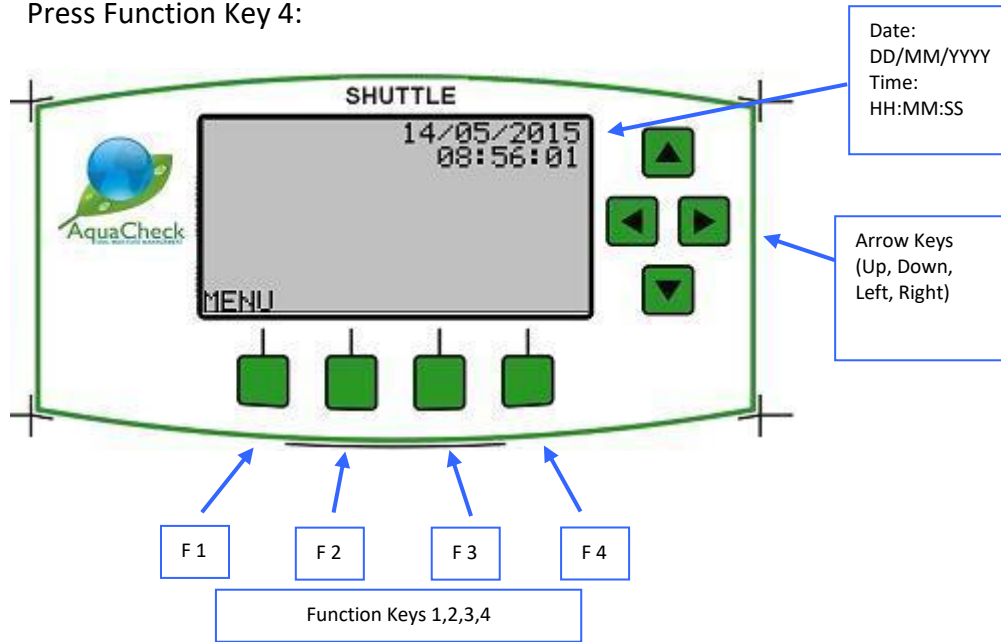
- |  |   |
|--|---|
| 1. Scanning the Probes                       | 8 |
| 2. Loading of Shuttle data onto AquaCheckWeb | 8 |



# Shuttle / Probe Setup Guide

## 1. Switching the Shuttle On

- Press Function Key 4:



## 2. Setting the Date and Time on the Shuttle

- Press MENU (Function Key 1)
- Use the Down Arrow Key until you see Set Time
- Select OK (Function Key 1)
- Set the date and time
- Select OK (Function Key 1)



### 3. Configuring Groups

- Select MENU (Function Key 1)
- Use the Down Arrow Key until you see Probe lists
- Select OK (Function Key 1)
- Highlight DefaultGroup 01 (up/down arrows)
- Select Edit (Function Key 2)
- Rename the group to the desired name
- Select OK (Function Key 1)
- Select Channel 11 for V32 probes (Old BASIC III LOGGER) or
- Select Channel 10 for V43 probes (NEW SHUTTLE)

### 4. Adding new Probes

- Select MENU (Function Key 1)
- Use the Down Arrow Key until you see Probe lists
- Select OK (Function Key 1)
- Highlight the new Group that was created (up/down arrows)
- Select Probe (Function Key 1)
- Select Add (Function Key 3)
- Type in serial number of the new probe by using the up/down/left/right arrow keys – serial number can be found on probe head. Make sure if the number is 5 digits to start with a zero (0).
- Select Next (Function Key 1)
- Leave all settings as is and select OK (Function Key 1)
- More probes can be added to this group by selecting the Add key (Function Key 3) again.
- Select Back (Function Key 4)
- Select Cancel (Function Key 4)
- Select Exit (function Key 4)



## 5. Best Practice when setting up Groups and adding Probes

- When creating a new group only add either Old BASIC III LOGGER Probes (V32) or NEW SHUTTLE Probes (V43) to a specific group.
- Shuttle must have Firmware V009A loaded to be able to read both V32 and V43 probes. To load latest Firmware please refer to <https://aquacheck.zendesk.com/hc/en-us/articles/360013431672-Manuals-Shuttle>
- Do not add both types of probes to one group.
- When setting the Channel in each group take care to select the correct Channel:
  - i. Old BASIC III LOGGER Probes (V32) ---- Channel 11
  - ii. NEW SHUTTLE Probes (V43) ---- Channel 10

## 6. Switching new Probes On

- Remove the topcap from the probe by loosening the Phillips screw on the side and by using a twist and pull action to remove the cap.
- Connect the terminal to the plug
- Place the topcap back onto the probe and tighten the screw.

## 7. Setting the Date and Time on a new Probe

### **Must be done directly after inserting the battery into probe**

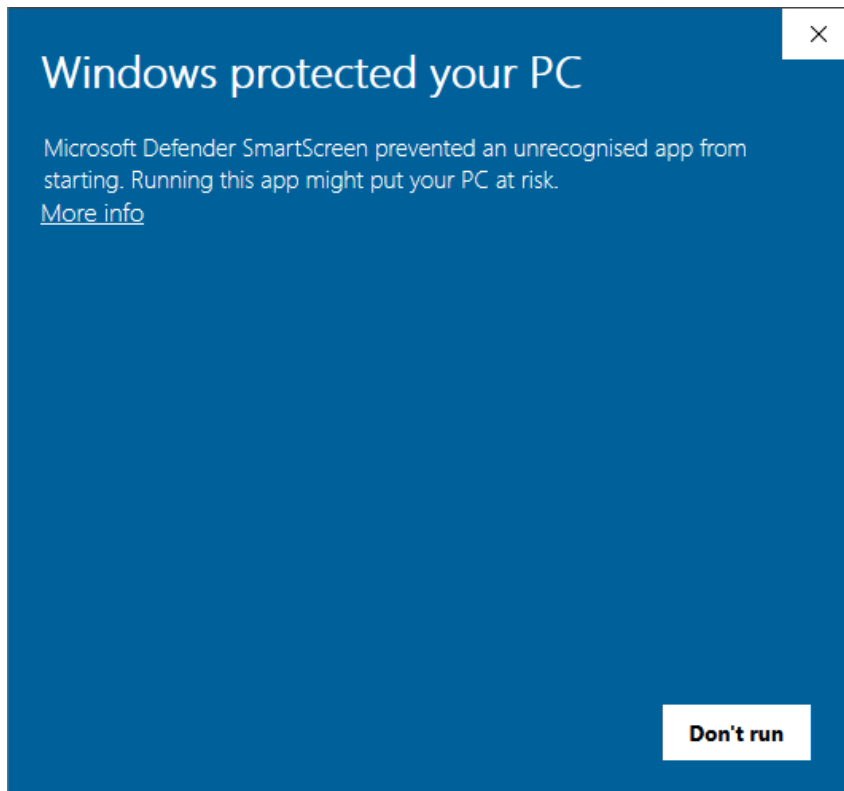
- After completing step 5 switch on the Shuttle (Function Key 4)
- Select MENU (Function Key 1)
- Highlight Group Download
- Select OK (Function Key 1)
- Highlight desired Group (up/down arrows)
- Select Download (Function Key 1)



# FTP Upload Utility Setup Guide

## 1. Installation of FTP Upload Utility

- Download the FTP Upload Utility software from the link: <https://aquacheck.zendesk.com/hc/en-us/articles/215623923-Setup-FTP-Upload-Utility-Ver-2->
- Install the software by running LoggerUtil.Setup.msi
- After installation connect the Shuttle to the PC via the usb cable.
  - i. Please note: Some Windows installations may display a message as displayed below. On this message, click on More info to RUN anyway.

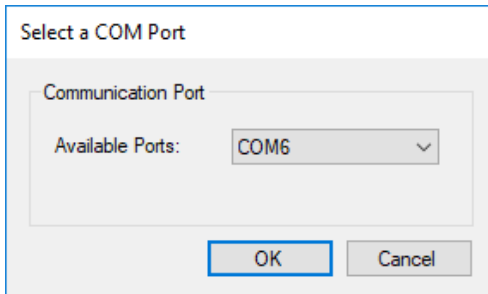


- Wait a few minutes for Windows to install the driver for the port.
- Create folder C:\AquaCheck Logger\Data on your c-drive

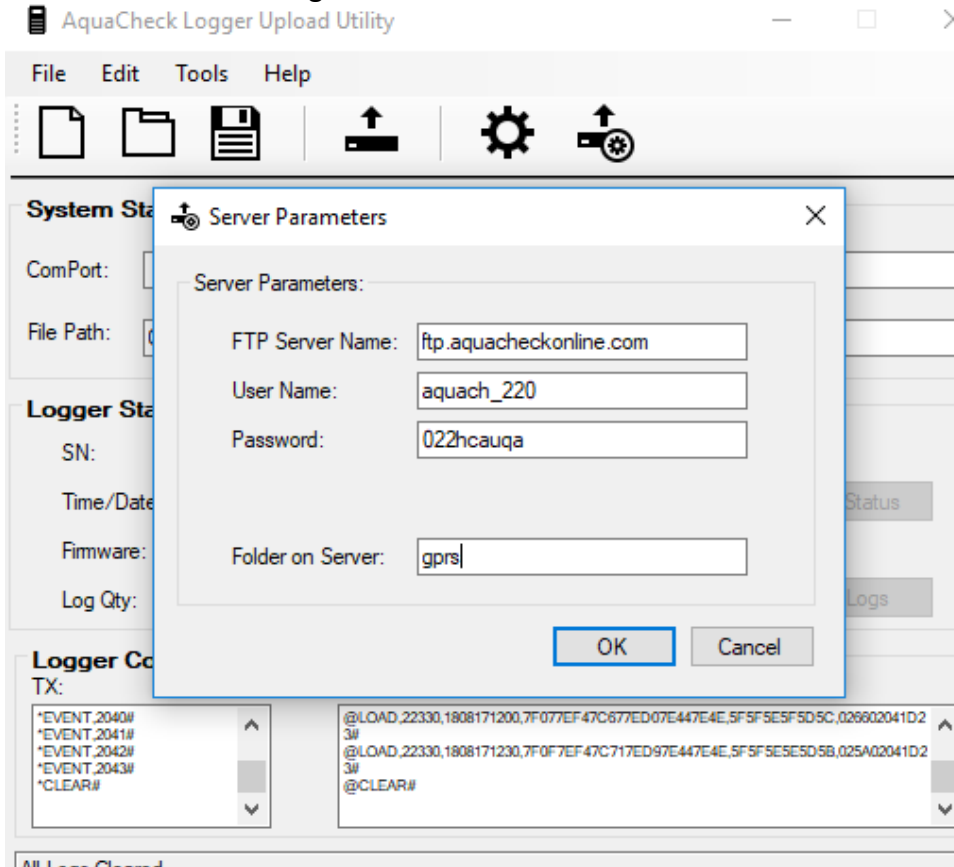


## 2. Configuration of FTP Upload Utility

- Open Start>Programs>AquaCheck>AquaCheck Data Logger
- Select the correct Com port – might not be Com6:



- Click on Edit>Change Default Path
- Set path to C:\AquaCheck Logger\Data
- Click on Edit>FTP settings:



FTP Server Name: ftp.aquacheckonline.com  
User Name: aquach\_220  
Password: 022hcauqa  
Folder on Server: gprs



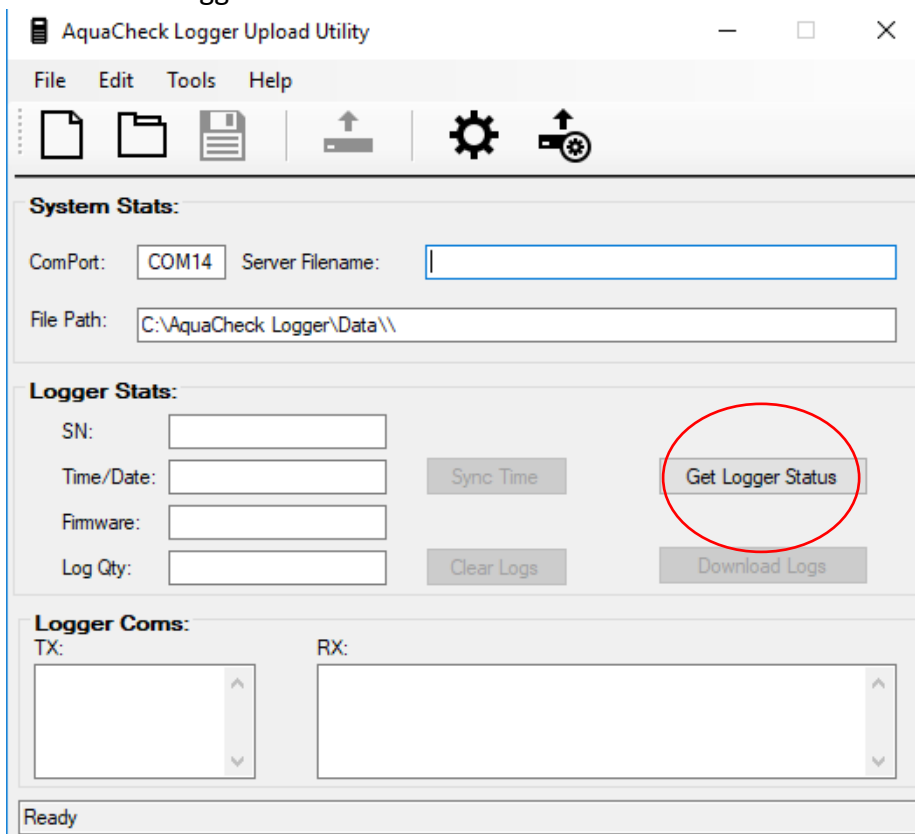
# Scanning of Probes with the Shuttle

## 1. Scanning the Probes

- Switch on the Shuttle (Function Key 4)
- Select MENU (Function Key 1)
- Highlight Group Download
- Select OK (Function Key 1)
- Highlight desired Group (up/down arrows)
- Select Download (Function Key 1)

## 2. Loading of Shuttle data onto AquaCheckWeb

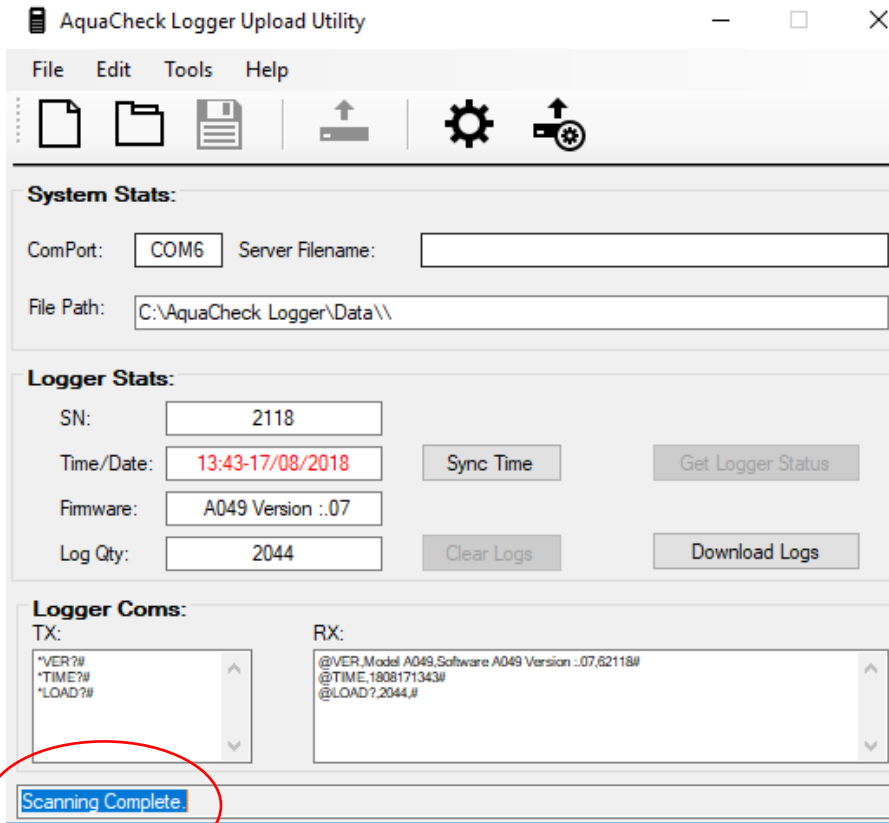
- After reading of probes are completed connect the Shuttle via the USB cable to your PC/laptop.
- Open the AquaCheck Data Logger program.
- Click on Get Logger Status:



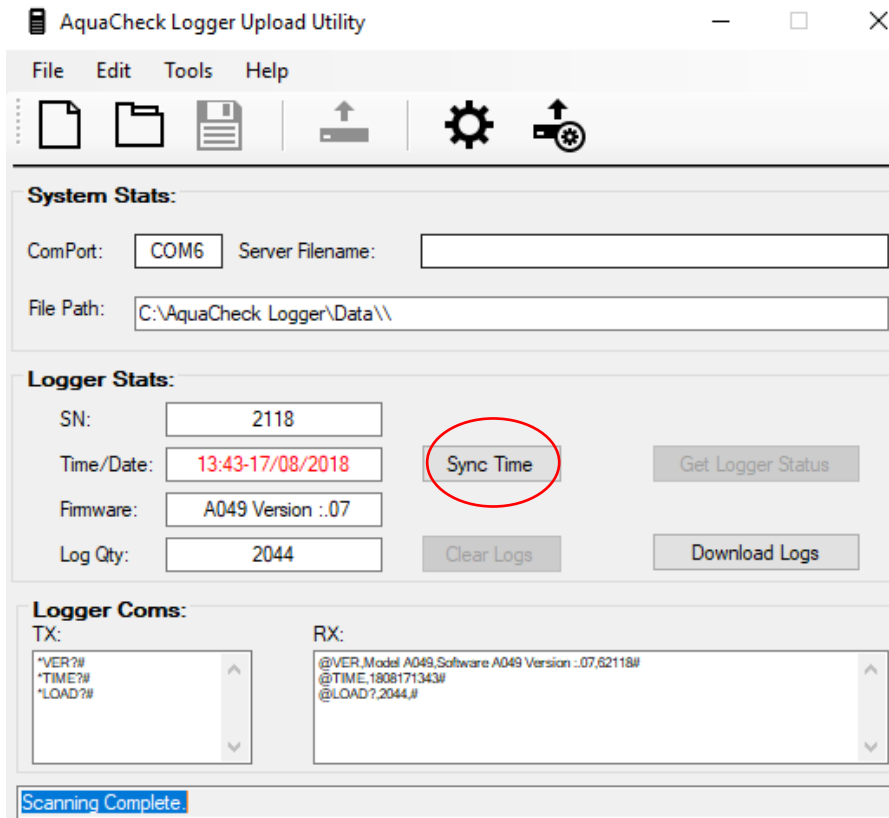




- Wait for the scanning to complete:

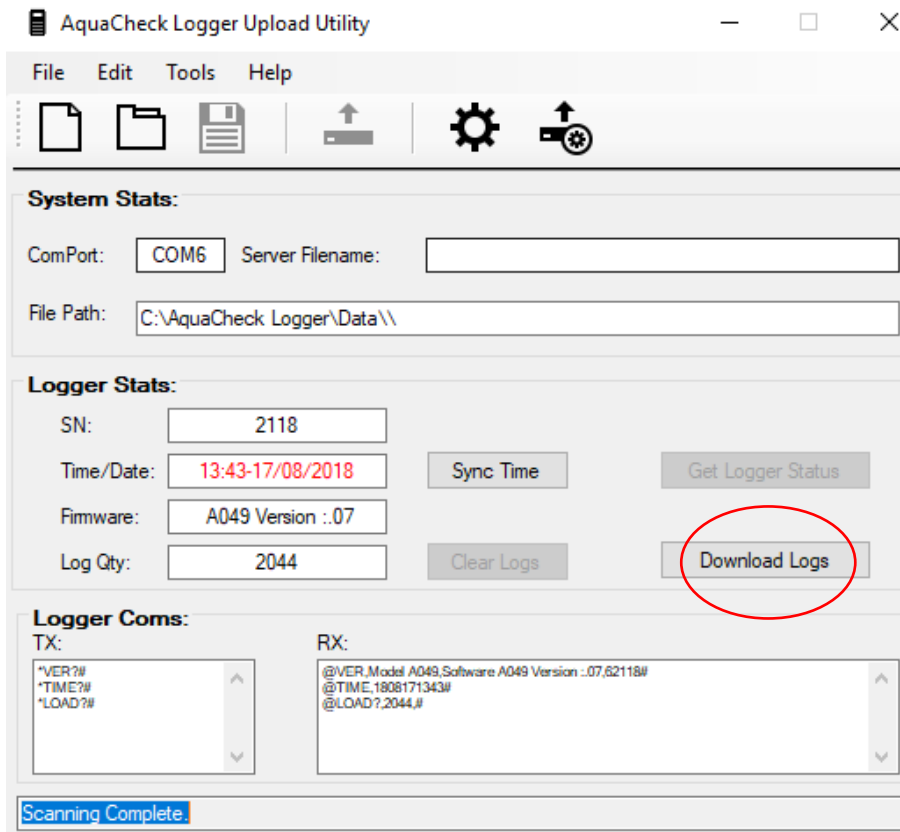


- After scanning is complete make sure the Time/Date is correct. If not click on Sync Time:

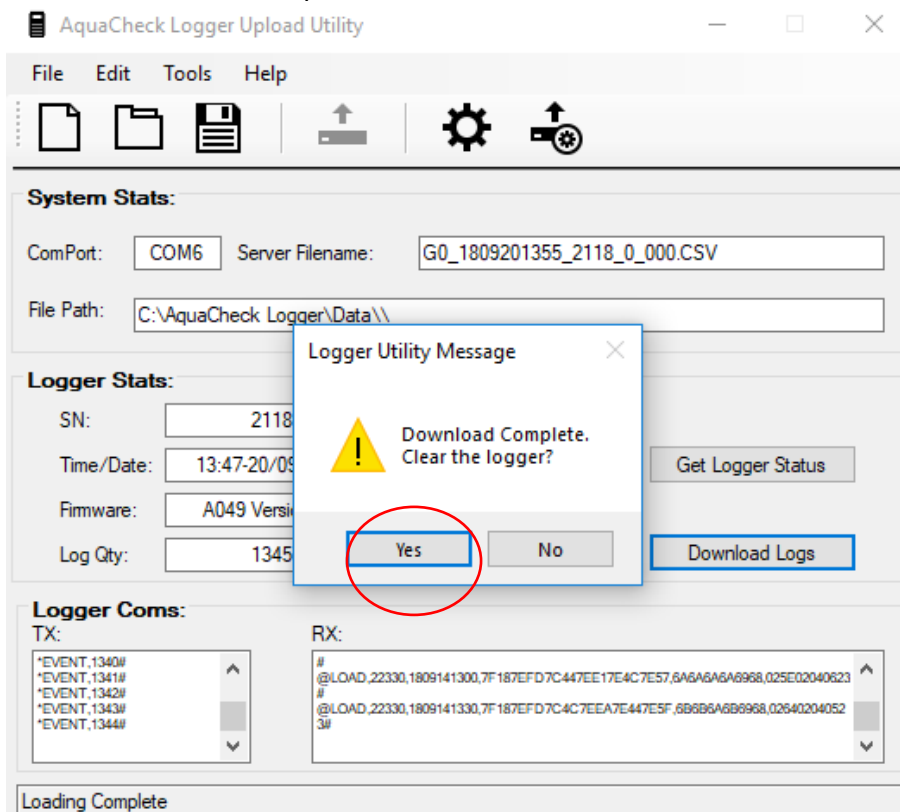




- Click on Download logs:

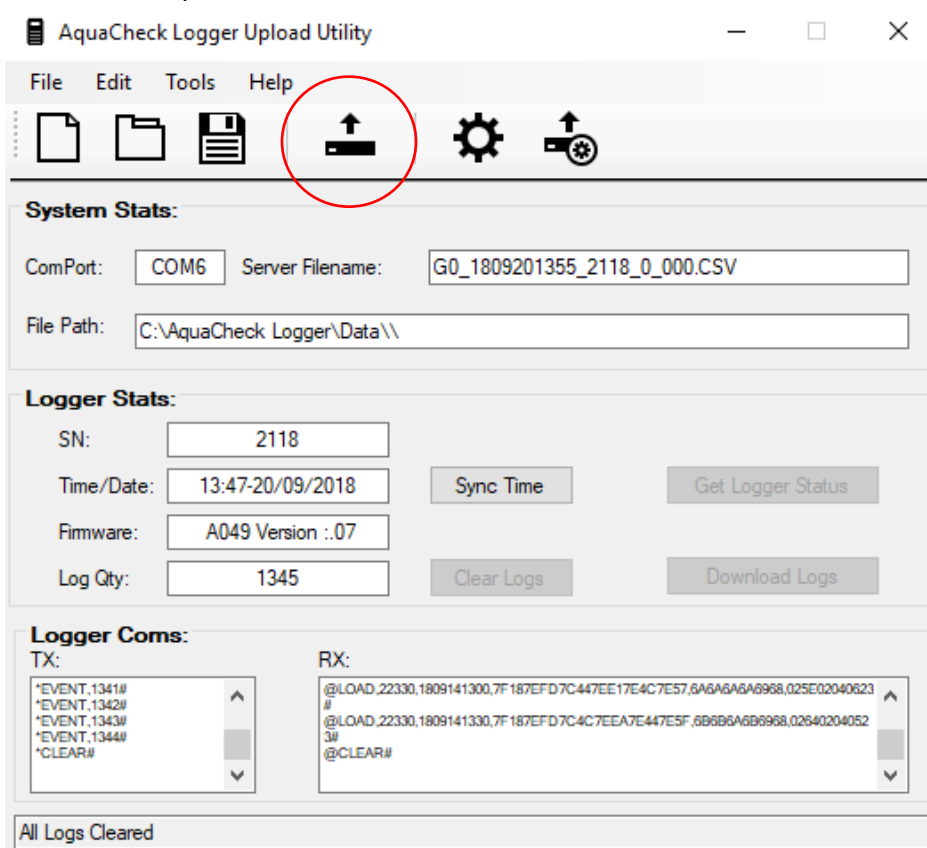


- After Download is complete click on Yes:

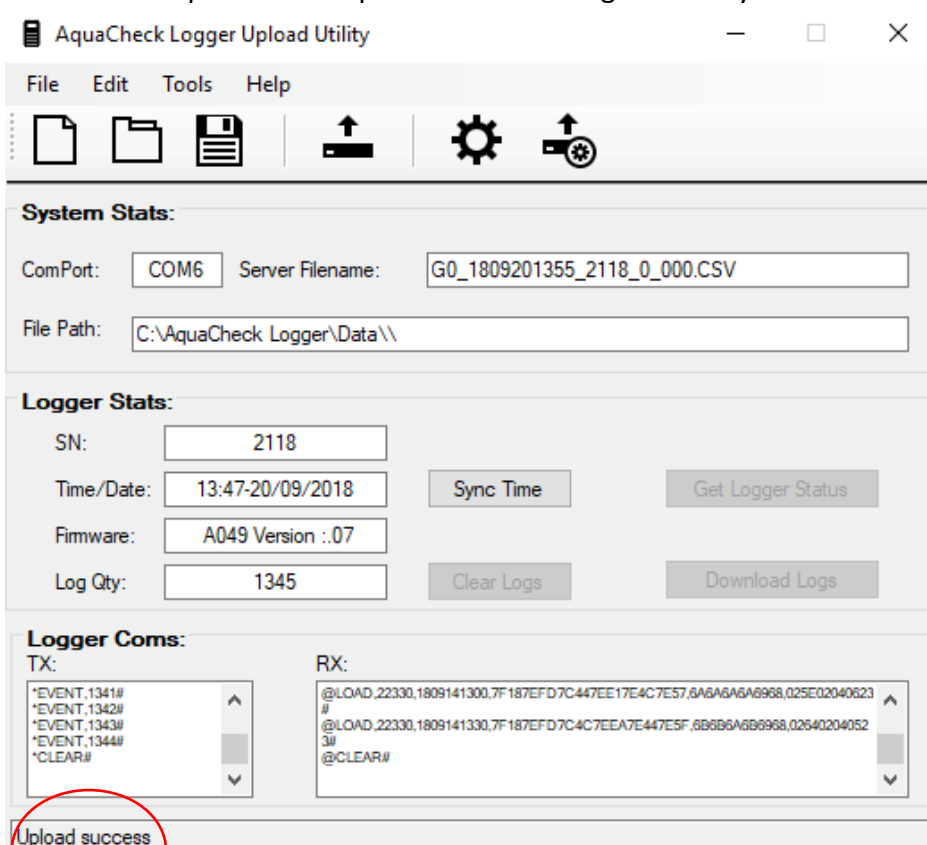




- Click on the upload icon:



- Wait for the upload to complete before closing the Utility:



# Our Global Footprint

AquaCheck's head office and factory are in Cape Town, South Africa. A global distribution network provides the full range of soil moisture management equipment to farmers worldwide.



AquaCheck (Pty) Ltd.

Suite D1, First Floor, Cape Gate Corner, Nitida Avenue,  
Brackenfell, Cape Town, South Africa

Phone International: +27 21 970 5140, Phone South Africa: 021 970 5140,  
Email: [info@aquacheck.co.za](mailto:info@aquacheck.co.za)

[www.aquacheck.co.za](http://www.aquacheck.co.za)